

# Rankin Crescent, Lochyside



## Houses for Sale

### New Supply Shared Equity (NSSE) Scheme

**4 x 2 Bed 4 Person Semi Detached Homes  
For Sale at 60-80% of £175,000**

**60% Share: £105,000**

**80% Share: £140,000**



LOCHABER  
HOUSING  
ASSOCIATION



Scottish  
Government  
Riaghaltas  
na h-Alba

## Location

Rankin Crescent is situated north of Fort William town centre at Lochyside, enjoying views of Ben Nevis, Aonach Mor and surrounding countryside.

Lochyside is an established and popular residential area and is mainly serviced by the nearby village of Caol, which has a well-stocked general store, community hall and a variety of shops. There is a well-established bus route to Fort William.

There are three Primary Schools in Caol and Lochaber High School is just a short walk from the property.



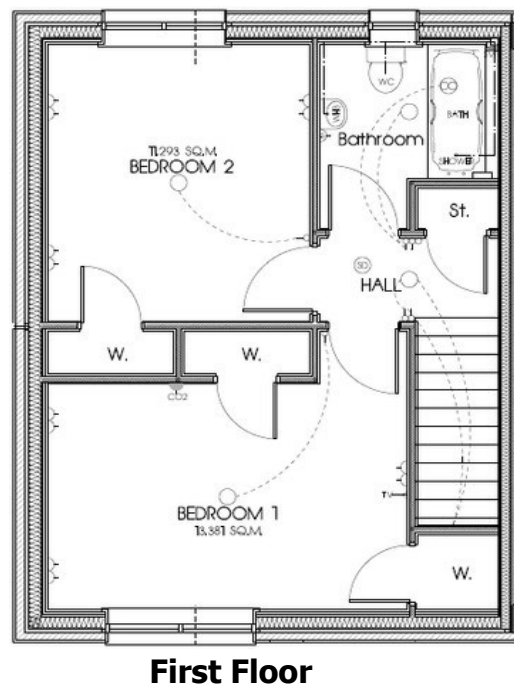
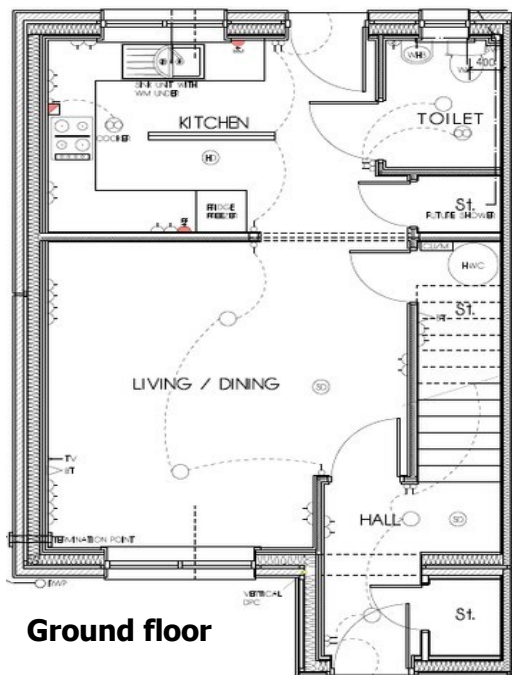
The project at Rankin Crescent is due to be completed in spring 2026, with sales settling shortly after this date. Plots 8, 10, 12 and 14 Rankin Crescent are available through the NSSE Scheme and are two bedroom four person semi-detached homes.



# Property Specifications

The properties have been constructed by Campbell Homes, all properties will be built with the following specifications:

- External walls- timber frame and blockwork construction
- External finish- smooth rendered with composite cladding to porches
- Air to Air Heat Pump Heating. Hot water provided by unvented cylinder
- Double glazed uPVC windows and composite external doors
- Howdens kitchen in neutral colour with black worktops and plumbing for washing machine
- Bathroom including bath, wash hand basin, toilet and contemporary white wet wall
- Downstairs WC
- In - curtilage parking
- Enclosed rear garden
- Flooring not provided
- EPC band C rating
- Council Tax band D (subject to formal assessment)





# Step by Step Process

Please read our **New Supply Shared Equity (NSSE) Properties Information Sheet** before applying.

1	Complete the Application Form and pay your Reservation Fee. Online Application Form: <a href="https://bit.ly/NSSE-Application-Form">https://bit.ly/NSSE-Application-Form</a>
2	Speak to a Financial Advisor to assess your suitability in securing a mortgage (if required). They will also give you advice about the percentage stake you can purchase based on your income and/or savings. You will require a Mortgage Decision in Principle from your lender, to be submitted with your application. Seek appropriate legal advice through a solicitor.
3	Applications will be processed in date order of receipt and payment of the Reservation Fee, according to the Scheme's allocation and financial criteria. This means that plots will be reserved on a first come first served basis.
4	If you are successful, you will be contacted to confirm the offer. You will need to formally accept the offer in writing.
5	We will arrange for you to view the allocated plot.
6	You then need to let your solicitor and your financial advisor know that you are ready to proceed with your property purchase.
7	The lender will then arrange for a mortgage valuation report of the property to be undertaken.
8	Your solicitor will confirm the terms of the sale, agree a date of entry and arrange for you to sign the relevant paperwork.
9	Your solicitor and mortgage lender will arrange for all the funds and paperwork to be in place for the agreed settlement date.
10	You can collect the keys to your new home!



**Lochaber Housing Association, 101 High Street, Fort William, PH33 6DG**  
**01397 702530** [info@lochaberhousing.org.uk](mailto:info@lochaberhousing.org.uk) [www.lochaberhousing.org.uk](http://www.lochaberhousing.org.uk)